

ZAXIS-6 series

HITACHI

Reliable solutions

ZAXIS250



## HYDRAULIC EXCAVATOR

Model code : ZX250LC-6 / ZX250LCN-6

Engine rated power : 140 kW (ISO14396)

Operating weight : 25 700 – 28 100 kg

Bucket ISO heaped : 0.80 – 1.40 m<sup>3</sup>

# ZX250LC-6. NO COMPROMISE

The ZX250LC-6 incorporates unique Hitachi technology that has been specially developed for the Zaxis-6 medium excavator range. This innovative model has been created with the highest level of performance, but without compromising on the increasing demand for operational efficiency.

The result is the ultimate excavation machine, reinforcing Hitachi's reputation for the quality of its engineering and the durability of its products. The ZX250LC-6 is the epitome of reliability, with incredibly versatile features that highlight its suitability for a wide range of industry solutions.



**6. AN UNDISPUTED REPUTATION FOR RELIABILITY**



**8. DEDICATED TO DURABILITY**



**10. THE ULTIMATE IN VERSATILITY**



HITACHI

250



12. OF THE HIGHEST QUALITY



14. THE HEIGHT OF TECHNOLOGY

# DEMAND PERFECTION

The Hitachi ZX250LC-6 has been designed in Japan at the world's biggest excavator factory for the specific needs of the European construction industry. It has been developed to perfection using market-leading technology to deliver exceptional productivity at the lowest possible cost of ownership.



## High quality

Only the best design elements and materials.



## Incredible versatility

Tilt and rotary tilt modes complete the attachment support system.



## Lifetime reliability

Reliable components help to prevent oil leaks.



## Ultimate durability

Three track guards enhance reliability.



### Optimum performance

Remote monitoring with Global e-Service online application.



### User-friendly

Safety comes first with handrails and a reinforced platform.



### Low emissions

SCR system reduces NOx from exhaust gas.



### Low fuel consumption

19% fuel saving in ECO mode (10% in PWR mode).



### Easy maintenance

Convenient and wide-opening engine cover.



### Excellent efficiency

TRIAS II system reduces total hydraulic loss.



### Engine protection

High-performance and large-capacity fuel circuit.



“ *Hitachi machines are extremely reliable, with 98% availability!* ”

Kristen Petillon, Fleet Equipment Manager, Razel

# AN UNDISPUTED REPUTATION FOR RELIABILITY

Like all Hitachi Zaxis-6 medium excavators, the ZX250LC-6 is renowned for its reliability to achieve optimum levels of availability and performance. It will operate with the utmost efficiency across a wide range of demanding job sites – all day, every day – and deliver a profitable return on investment.

## Easy maintenance

The engine cover can be conveniently opened up fully from the platform. This provides easy access to the engine compartment and other components for routine maintenance.

## Reduced risk of oil leaks

A rubber hose fitted with a flange has been incorporated into the design of the hydraulic return pipes. These enhance the reliability of the system and reduce the risk of oil leaks.

## Reduced fuel contamination

The main fuel filter screws into place on the ZX250LC-6. This makes it easier to replace and ensures that dust is prevented from entering the fuel circuit during routine maintenance procedures.

## More efficient cooling

The expansion tank is mounted on top of the engine's cooling system. This revised position means that the air can be completely removed and prevents the engine parts from overheating.

## Reinforced motor cover

The thickness of the travel motor cover has increased from 4.5mm (on the previous model) to 8mm on the ZX250LC-6. The position of the bolts has also been optimised to reduce the risk of damage.



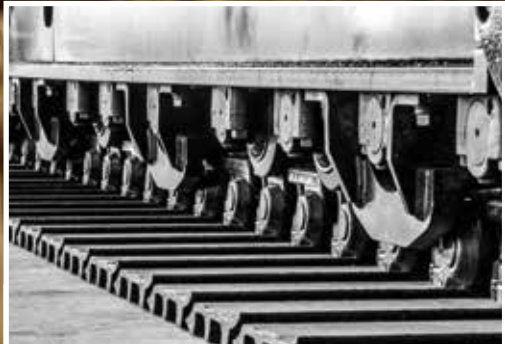
Easy access to the engine compartment.



The main fuel filter is easier to replace.



The expansion tank prevents engine parts from overheating.



More track guards enhance the durability of the track link.



Improved performance derived from the fuel circuit.



**i** Hitachi's stringent testing procedures for durability include an excavating and operating assessment – from 1,000 to more than 10,000 hours – and a 24-hour swing test with a remote-controlled machine.



# DEDICATED TO DURABILITY

With more than four decades' experience of manufacturing mechanical and hydraulic excavators, Hitachi has a market-leading reputation for the most reliable and durable construction machinery. The ZX250LC-6 is no exception, having been designed and engineered to operate in the most challenging environments.



Reinforced for safer working environment.

## Strengthened undercarriage

Three track guards are fitted to the ZX250LC-6 as opposed to one on the previous model. These help to reduce the likelihood of any damage being caused to the track link and enhances the reliability.

## Enhanced fuel circuit

A high-performance water separator and cold fuel resistance valve are integrated into the pre-filter for added protection against moisture. In addition, a large capacity electric fuel pump supplies appropriate fuel quantity to the engine for improved performance.

## Engine protection

The combustion chamber is made from stronger materials and the revised shape of

the piston is designed to achieve cleaner emissions. These features will further enhance the reliability of the engine.

## Oil leak prevention

The O-rings on the control valve and swing motor are made from fluorine. This highly durable material withstands high oil temperatures and reinforces the parts' reliability to prevent oil leaks.

## Reinforced platform

The covers on the platform walkway have been reinforced. This adds to the high-quality and safe working environment, which provides peace of mind for the operator.



“ It’s versatile – a good, all-round machine that’s easy to use and control ”

Philip Marsh, operator, Hughes & Salvidge

## THE ULTIMATE IN VERSATILITY

The power and performance of Hitachi medium excavators makes them the perfect choice for a wide range of construction applications. The versatility of the ZX250LC-6 means that it is one of the most popular models, providing a smooth, fast and precise operation, as well as high levels of productivity and fuel efficiency.

### Greater flexibility

The rotary tilt and tilt modes are included within the attachment support system on the ZX250LC-6. These and nine other modes can be registered on the monitor for the easy fitment of attachments to increase versatility.

### Increased utility

The swing torque is 9% greater than the ZX250LC-3 model. This enhanced swing performance means that it is easier to dig next to sidewalls and operate on slopes to highlight the increased utility.

### Machine performance

The ZX250LC-6 is equipped with two extra spools in the control valve. This increases versatility by making it easier to install

attachments that require multiple, large volumes of oil and on two-piece boom models.

### Power boost

The tried-and-tested power-boost feature has 10% more capacity than the ZX250LC-3. This increases the capability of the ZX250LC-6 to deliver an enhanced level of excavating performance and lifting power.

### Better visibility

There are fewer bars on the optional front guard and those remaining are reduced in size – yet retain their rigidity. This helps to minimise any blind spots and improves the operator’s visibility.



Two tilt modes add to the versatility of the ZX250LC-6.



Power boost has 10% more capacity.



Minimal blind spots improve visibility.



Superior weather resistance prevents damage.



Urea is injected into the exhaust gas to reduce emissions.

**i** Hitachi obtained ISO 9001 certification in 1995, which verifies its commitment to quality assurance policies, including the implementation of the uniform 'Made by Hitachi' global quality standard at its production bases worldwide.



# OF THE HIGHEST QUALITY

The race for quality has no finishing line at Hitachi's Tsuchiura Works factory in Japan – the largest facility of its kind in the world – and the ZX250LC-6 is the epitome of this quest. Each new model is delivered having been rigorously checked for the highest possible standards of performance, reliability and safety.



## Superior cooling and acoustic performance

The upper structure benefits from high-quality sealant (around the cooling package) and acoustic materials to eliminate any deterioration caused by heat. These ensure the long-term cooling and low-noise acoustic performance of the ZX250LC-6.

only helps the environment, but also complies with EU Stage IV emission regulations.

## Ultimate in comfort

Hitachi has always taken the lead in operator comfort and the ZX250LC-6 is no exception. A fully adjustable seat, spacious cab, ergonomic controls and advanced music system all contribute to the ultimate working environment.

## Excellent weather resistance

The in cab console has been sculpted in highly durable AES-grade resin. This ensures superior weather resistance and ultimately prevents the sun's ultraviolet rays from damaging the console.

## Safety at work

The ZX250LC-6 has been fitted with a high-spec rollover protective structure-compliant (ROPS) and centre pillar reinforced structure (CRES V) cab. The pressurised cab is designed to protect the operator from the penetration of dust and potential job site risks.

## Reduced emissions

Hitachi has developed a selective catalytic reduction (SCR) system that injects urea into exhaust gas to reduce nitrogen oxide from emissions. This cutting-edge technology not



Ergonomic controls contribute to the ultimate workspace.





“ *Hitachi is the only manufacturer to possess a high level of expertise in tuning the [TRIAS] hydraulic system* ”

Tsuyoshi Nakamura,  
General Manager Engineering,  
Hitachi Construction Machinery (Europe) NV



The TRIAS II hydraulic system consists of three pumps and valves.

## THE HEIGHT OF TECHNOLOGY

Hitachi utilises the power of IT as a strategic tool to provide a full range of solutions that meets the ever-changing needs of the construction industry. The ZX250LC-6 medium excavator is a typical example of the high-quality machinery that emerges as a result of this advanced technological approach.

### **Saving fuel and costs**

Hydraulic loss is decreased by TRIAS II technology. It reduces the hydraulic oil returned to the tank due to the cooperative control of the pump and valve. This helps to lower fuel consumption by 10% in PWR mode with the same productivity.

### **User-friendly functionality**

A large seven-inch multi-function LCD monitor provides a wide range of useful technical information. With multi-lingual

support in up to 32 languages, it enables operators to check the machine's status and settings at a glance.

### **Remote monitoring**

Global e-Service allows ZX250LC-6 owners to monitor their fleets of Hitachi construction machinery remotely via Owner's Site (24/7 online access) and ConSite (an automatic monthly report). These help to maximise efficiency, minimise downtime and improve overall performance.

### **Fewer emissions**

The after-treatment device consists of a diesel oxidation catalyst (DOC), urea mixing pipe, SCR system and silencer. This advanced technology helps to reduce emissions and noise levels.

### **Advanced audio system**

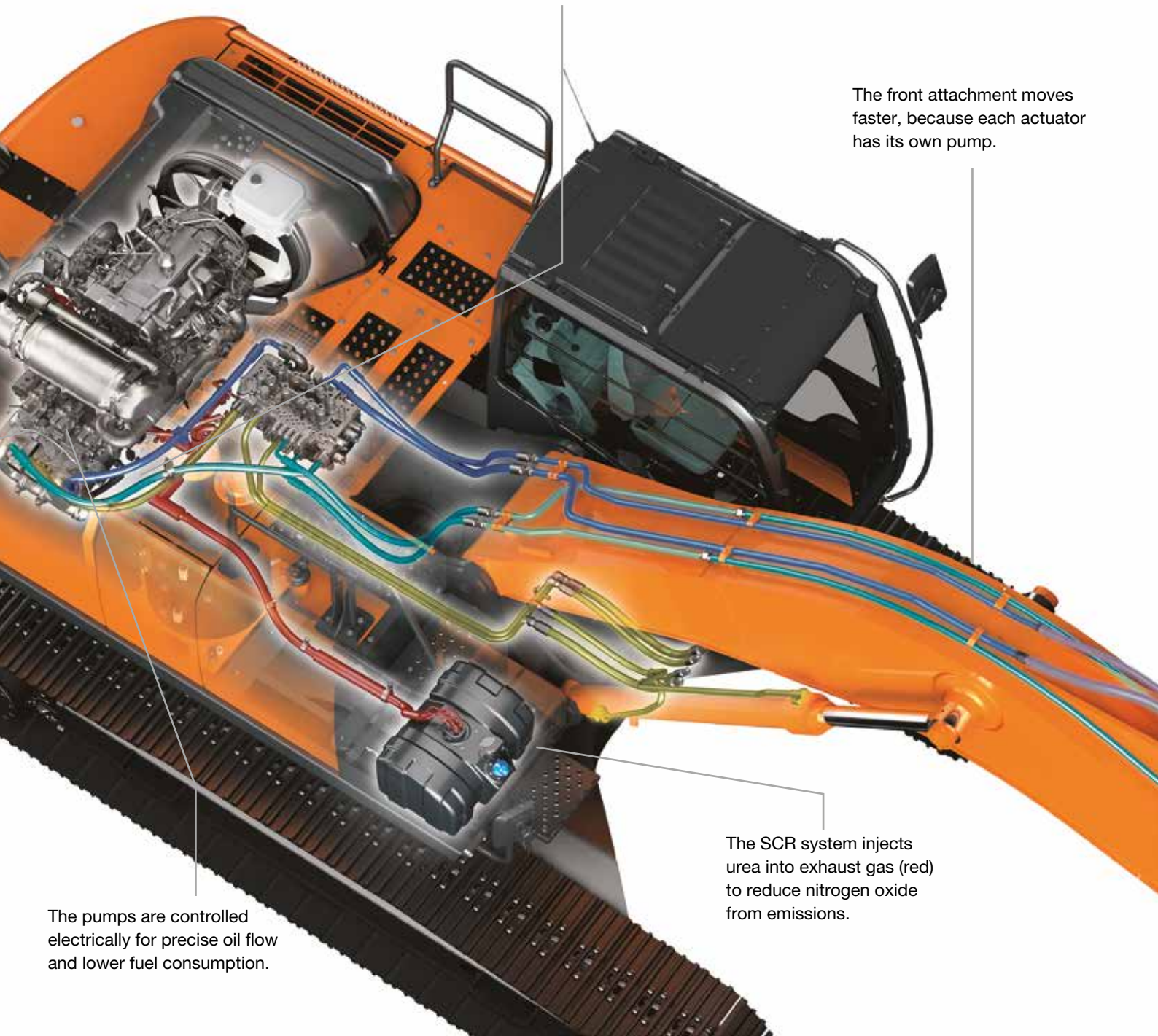
The AM/FM radio is accessible from the monitor and an auxiliary socket – for devices such as MP3 players – is linked to the sound system. This choice of entertainment helps to provide an enjoyable – and productive – working environment.

The oil flows separately to the bucket (light blue), arm (dark blue) and boom (yellow) cylinders.

The front attachment moves faster, because each actuator has its own pump.

The pumps are controlled electrically for precise oil flow and lower fuel consumption.

The SCR system injects urea into exhaust gas (red) to reduce nitrogen oxide from emissions.



10% lower fuel consumption in PWR mode with TRIAS II.



The LCD monitor shows the machine's status and settings.



The SCR system reduces emissions and noise levels.



“ *The total cost of ownership is of maximum benefit to our company* ”

Peter Kogel, Member of the Management Board,  
Kögel Bau GmbH & Co. KG

## REDUCING THE TOTAL COST OF OWNERSHIP



**SUPPORT CHAIN**

Hitachi has created the Support Chain after-sales programme to ensure optimum efficiency, as well as minimal downtime, reduced running costs and high resale values.

### **Global e-Service**

Hitachi has developed two remote monitoring systems as part of its Global e-Service online application. Owner's Site and ConSite are an integral part of the excavator, which sends operational data daily via GPRS or satellite to [www.globaleservice.com](http://www.globaleservice.com). This allows immediate access to the Owner's Site, and the vital information that is required for support on job sites.

Comparing the ratio of operating and non-operating hours helps to enhance efficiency. Effective management of maintenance programmes helps to maximise avail-

ability. Running costs can also be managed by analysing the fuel consumption. The location and movements of each machine are clearly displayed for essential planning.

An automatic service report – ConSite – sends a monthly email summarising the information from Global e-Service for each machine. This includes: daily working hours and fuel consumption data; statistics on the operating mode ratio, plus a comparison for fuel consumption/efficiency, and CO<sub>2</sub> emissions.

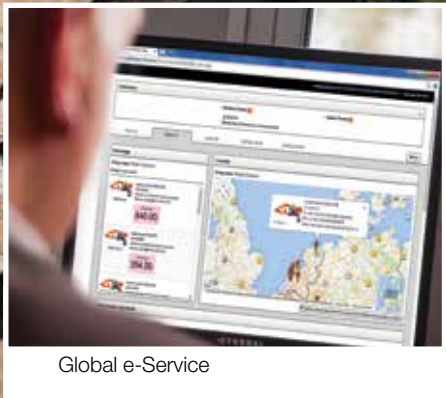
### **Technical support**

Each Hitachi service technician receives full technical training from HCME in Amsterdam. These sessions provide access to the same technical knowledge available within the Hitachi quality assurance departments and design centres. Technicians combine this global expertise with the local language and culture of the customer to provide the highest level of after-sales support.

### **Extended warranty and service contracts**

Every new Hitachi Zaxis-6 model is covered by a full manufacturer's warranty. For extra





Global e-Service



Technical support



Hitachi Parts

protection – due to severe working conditions or to minimise equipment repair costs – Hitachi dealers offer a unique extended warranty called HELP (Hitachi Extended Life Program) and comprehensive service contracts. These can help to optimise the performance of each machine, reduce downtime and ensure higher resale values.

## Parts

Hitachi offers a wide range and a high availability of parts dispatched from the 53,000 m<sup>2</sup> HCME European Parts Depot in The Netherlands.

- Hitachi Genuine Parts: allow machines to work for longer, with lower running and maintenance costs.
- Hitachi Select Parts and 2Genuine Parts: especially for older machines, they cost less, are of proven quality and come with the manufacturer's warranty.
- Performance Parts: to cope with highly demanding conditions, they have been engineered for greater durability, better performance or longer life.

- Remanufactured components: offering an economically viable solution, they are the best option when preventative replacements are required.

Whatever the choice, the renowned quality of Hitachi construction machinery is assured.



EH dump trucks



EX ultra-large excavators



ZW wheel loaders



“ We develop construction machinery that contributes to the creation of affluent and comfortable societies ”

Yuichi Tsujimoto, HCM President

## BUILDING A BETTER FUTURE

Established in 1910, Hitachi, Ltd. was built upon a founding philosophy of making a positive contribution to society through technology. This is still the inspiration behind the Hitachi group's reliable solutions that answer today's challenges and help to create a better world.

Hitachi, Ltd. is now one of the world's largest corporations, with a vast range of innovative products and services. These have been created to challenge convention, improve social infrastructure and contribute to a sustainable society.

Hitachi Construction Machinery Co., Ltd. (HCM) was founded in 1970 as a subsidiary of Hitachi, Ltd. and has become one of the world's largest construction equipment suppliers. A pioneer in producing hydraulic excavators, HCM also manufactures wheel loaders, rigid dump trucks, crawler cranes and special application machines at state-of-the-art facilities across the globe.

Incorporating advanced technology, Hitachi construction machinery has a reputation for the highest quality standards. Suitable for a wide range of industries, it is always hard at

work around the world – helping to create infrastructure for a safe and comfortable way of living, developing natural resources and supporting disaster relief efforts.

Hitachi Zaxis excavators are renowned for being reliable, durable and versatile – capable of delivering the highest levels of productivity under the most challenging of conditions. They are designed to provide owners with a reduced total cost of ownership, and operators with the ultimate level of comfort and safety.



Mini excavators

# SPECIFICATIONS

## ENGINE

Model .....	Isuzu AQ-4HK1X
Type .....	4-cycle water-cooled, common rail direct injection
Aspiration .....	Variable geometry turbocharged, intercooled, cooled EGR
Aftertreatment .....	DOC and SCR system
No. of cylinders .....	4
Rated power	
ISO 14396 .....	140 kW at 2 000 min <sup>-1</sup>
ISO 9249, net .....	132 kW at 2 000 min <sup>-1</sup>
SAE J1349, net .....	132 kW at 2 000 min <sup>-1</sup>
Maximum torque .....	676 Nm at 1 800 min <sup>-1</sup>
Piston displacement .....	5.193 L
Bore and stroke .....	115 mm x 125 mm
Batteries .....	2 x 12 V / 126 Ah

## HYDRAULIC SYSTEM

### Hydraulic Pumps

Main pumps .....	3 variable displacement axial piston pumps
Maximum oil flow .....	2 x 224 L/min 1 x 200 L/min
Pilot pump .....	1 gear pump
Maximum oil flow .....	35.5 L/min

### Hydraulic Motors

Travel .....	2 variable displacement axial piston motors
Swing .....	1 axial piston motor

### Relief Valve Settings

Implement circuit .....	34.3 MPa
Swing circuit .....	32.4 MPa
Travel circuit .....	34.3 MPa
Pilot circuit .....	3.9 MPa
Power boost .....	38.0 MPa

### Hydraulic Cylinders

	Quantity	Bore	Rod diameter
Boom	2	125 mm	90 mm
Arm	1	140 mm	100 mm
Bucket	1	130 mm	90 mm
Positioning <sup>*1</sup>	1	150 mm	100 mm

\*1 : For 2-piece boom

## UPPERSTRUCTURE

### Revolving Frame

D-section frame for resistance to deformation.

### Swing Device

Axial piston motor with planetary reduction gear is bathed in oil. Swing circle is single-row. Swing parking brake is spring-set/hydraulic-released disc type.

Swing speed .....	11.0 min <sup>-1</sup>
Swing torque .....	77.5 kNm

### Operator's Cab

Independent spacious cab, 1 005 mm wide by 1 675 mm high, conforming to ISO\* Standards.

\* International Organization for Standardization

## UNDERCARRIAGE

### Tracks

Heat-treated connecting pins with dirt seals. Hydraulic (grease) track adjusters with shock-absorbing recoil springs.

### Numbers of Rollers and Shoes on Each Side

Upper rollers .....	2
Lower rollers .....	9
Track shoes .....	51
Track guards .....	3

### Travel Device

Each track driven by 2-speed axial piston motor. Parking brake is spring-set/hydraulic-released disc type. Automatic transmission system: High-Low.

Travel speeds .....	High : 0 to 5.5 km/h Low : 0 to 3.4 km/h
---------------------	---

Maximum traction force ... 222 kN

Gradeability .....

70% (35 degree) continuous

## SOUND LEVEL

Sound level in cab according to ISO 6396 ..... LpA 67 dB(A)

External sound level according to ISO 6395 and

EU Directive 2000/14/EC ..... LwA 102 dB(A)

## SERVICE REFILL CAPACITIES

Fuel tank .....	510.0 L
Engine coolant .....	31.0 L
Engine oil .....	27.0 L
Swing device .....	9.1 L
Travel device (each side) .....	7.8 L
Hydraulic system .....	280.0 L
Hydraulic oil tank .....	156.0 L
DEF/AdBlue® tank .....	70.0 L

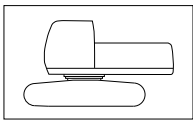
## WEIGHTS AND GROUND PRESSURE

### Operating Weight and Ground Pressure

			ZAXIS 250LC				ZAXIS 250LCN			
Boom type			Monoblock		2-Piece		Monoblock		2-Piece	
Shoe type	Shoe width	Arm length	kg	kPa	kg	kPa	kg	kPa	kg	kPa
Triple grouser	600 mm	2.19 m	26 100	52	26 700	53	26 000	52	26 600	53
		2.50 m	26 200	52	26 800	53	26 100	52	26 800	53
		2.96 m	26 200	52	26 900	53	26 200	52	26 800	53
	700 mm	2.19 m	26 400	45	27 000	46	26 300	45	27 000	46
		2.50 m	26 500	45	27 200	46	26 400	45	27 100	46
		2.96 m	26 600	45	27 200	46	26 500	45	27 100	46
	800 mm	2.19 m	26 700	39	27 300	40	26 600	39	27 300	40
		2.50 m	26 800	40	27 500	41	26 700	39	27 400	41
		2.96 m	26 900	40	27 500	41	26 800	40	27 400	41
	900 mm	2.19 m	27 200	36	27 900	37	27 100	36	27 800	36
		2.50 m	27 300	36	28 000	37	27 300	36	27 900	37
		2.96 m	27 400	36	28 000	37	27 300	36	28 000	37

Including 1.00 m<sup>3</sup> (ISO heaped) bucket weight (850 kg) and counterweight (6 200 kg).

### Basic Machine Weight and Overall Width



Excluding front end attachment, fuel, hydraulic oil and coolant etc. Including counterweight.

#### ZAXIS 250LC

Shoe width	Weight	Overall width
600 mm	21 000 kg	3 190 mm
700 mm	21 300 kg	3 290 mm
800 mm	21 600 kg	3 390 mm
900 mm	22 100 kg	3 490 mm

#### ZAXIS 250LCN

Shoe width	Weight	Overall width
600 mm	20 900 kg	2 990 mm
700 mm	21 200 kg	3 090 mm
800 mm	21 500 kg	3 190 mm
900 mm	22 000 kg	3 290 mm

### Components Weight

	Weight
Counterweight	6 200 kg
Monoblock boom (with arm cylinder and boom cylinder)	2 700 kg
2-Piece boom (with arm cylinder and boom cylinder)	3 360 kg
Arm 2.19 m (with bucket cylinder)	1 140 kg
Arm 2.50 m (with bucket cylinder)	1 270 kg
Arm 2.96 m (with bucket cylinder)	1 320 kg
Bucket 1.00 m <sup>3</sup>	850 kg

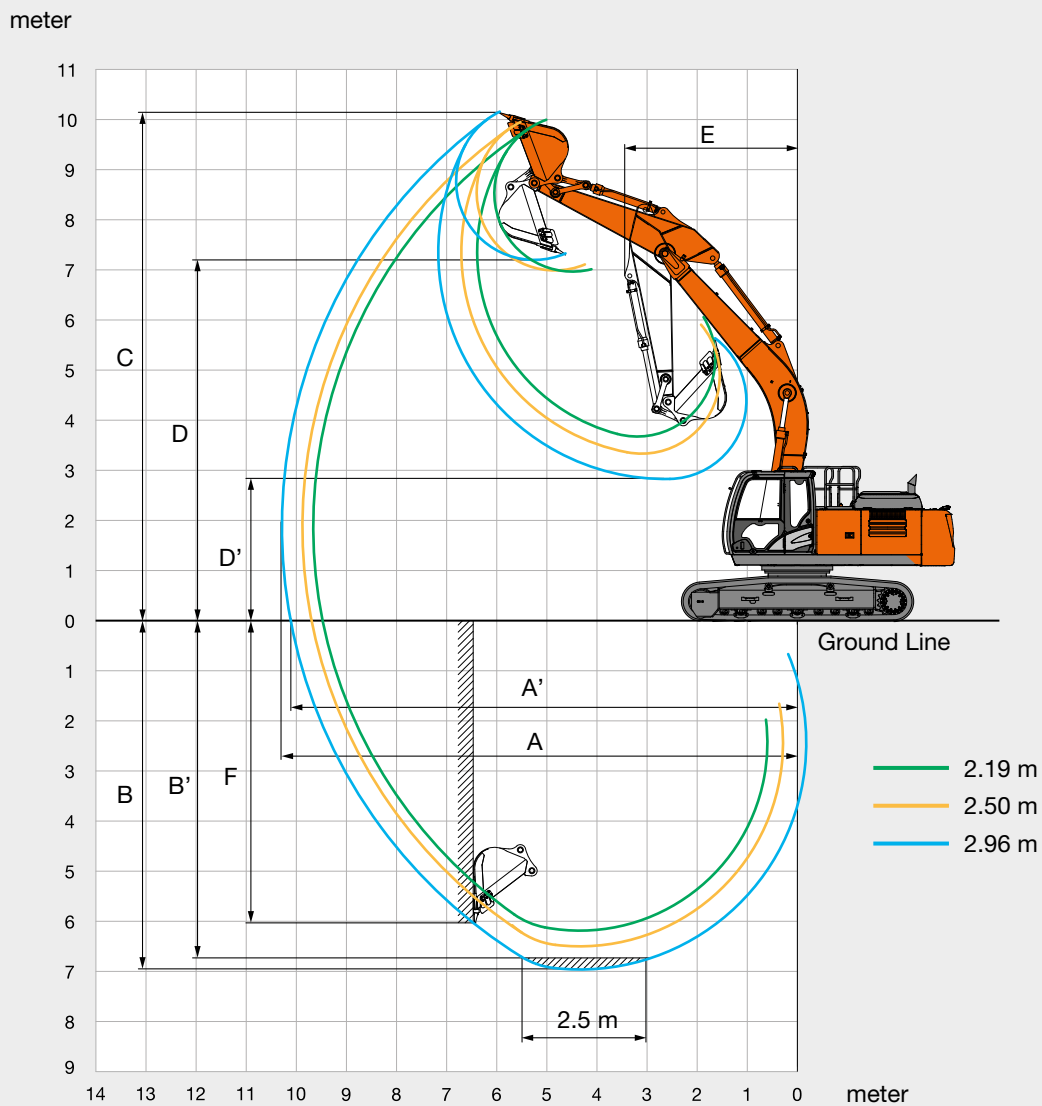
## BUCKET AND ARM DIGGING FORCE

Arm length	ZAXIS 250LC / ZAXIS 250LCN		
	2.19 m	2.50 m	2.96 m
Bucket digging force* ISO	188 kN		
Bucket digging force* SAE : PCSA	163 kN		
Arm crowd force* ISO	170 kN	156 kN	131 kN
Arm crowd force* SAE : PCSA	163 kN	155 kN	126 kN

\* At power boost

# SPECIFICATIONS

## WORKING RANGES: MONOBLOCK BOOM

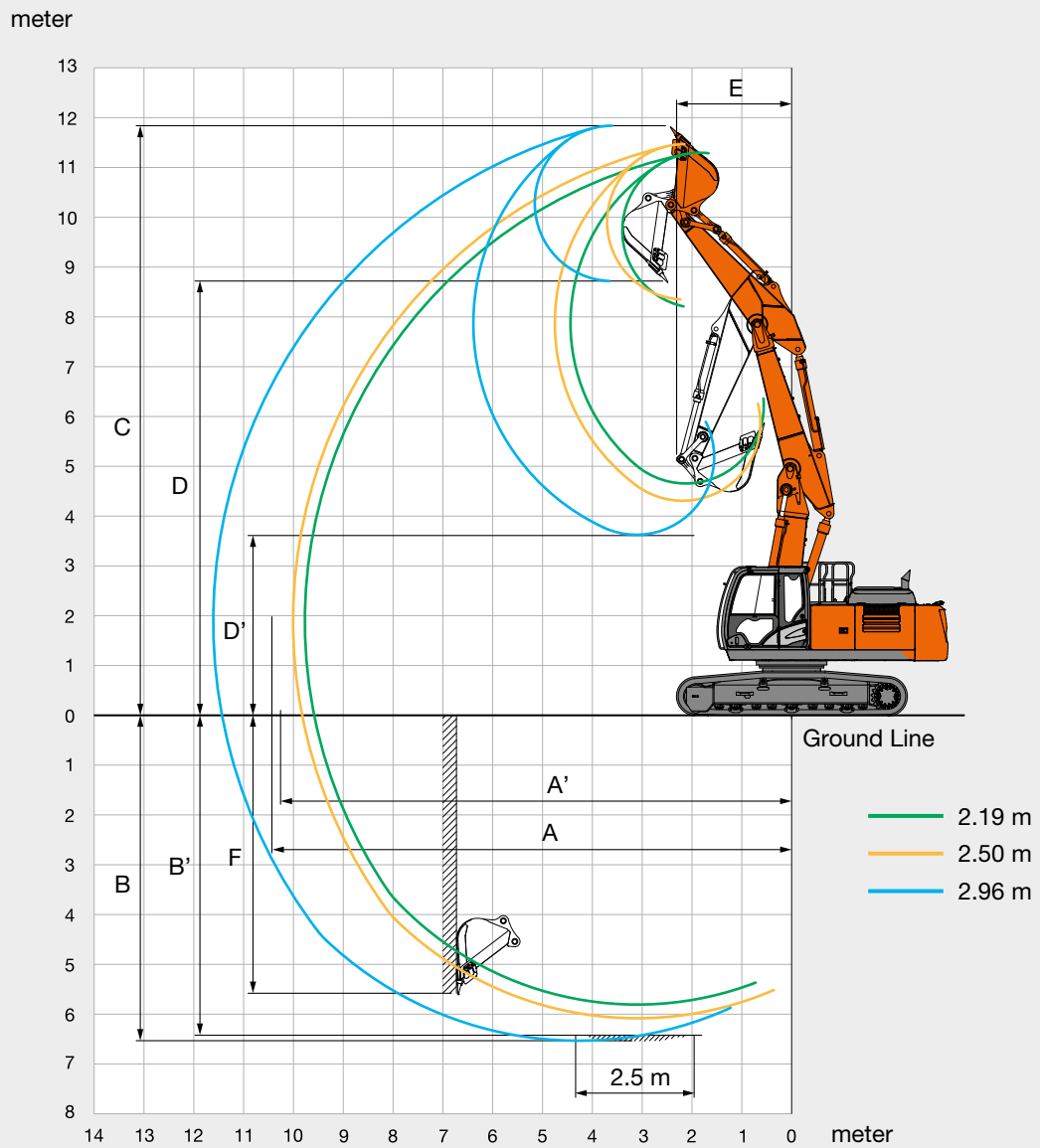


Unit: mm

	ZAXIS 250LC / ZAXIS 250LCN		
	Monoblock boom		
Arm length	2.19 m	2.50 m	2.96 m
A Max. digging reach	9 660	9 880	10 290
A' Max. digging reach (on ground)	9 470	9 690	10 110
B Max. digging depth	6 190	6 500	6 960
B' Max. digging depth for 2.5 m level	5 600	5 940	6 750
C Max. cutting height	10 000	9 950	10 160
D Max. dumping height	6 970	6 990	7 200
D' Min. dumping height	3 680	3 330	2 830
E Min. swing radius	3 580	3 480	3 440
F Max. vertical wall digging depth	5 650	5 580	6 030

Excluding track shoe lug

## WORKING RANGES: 2-PIECE BOOM



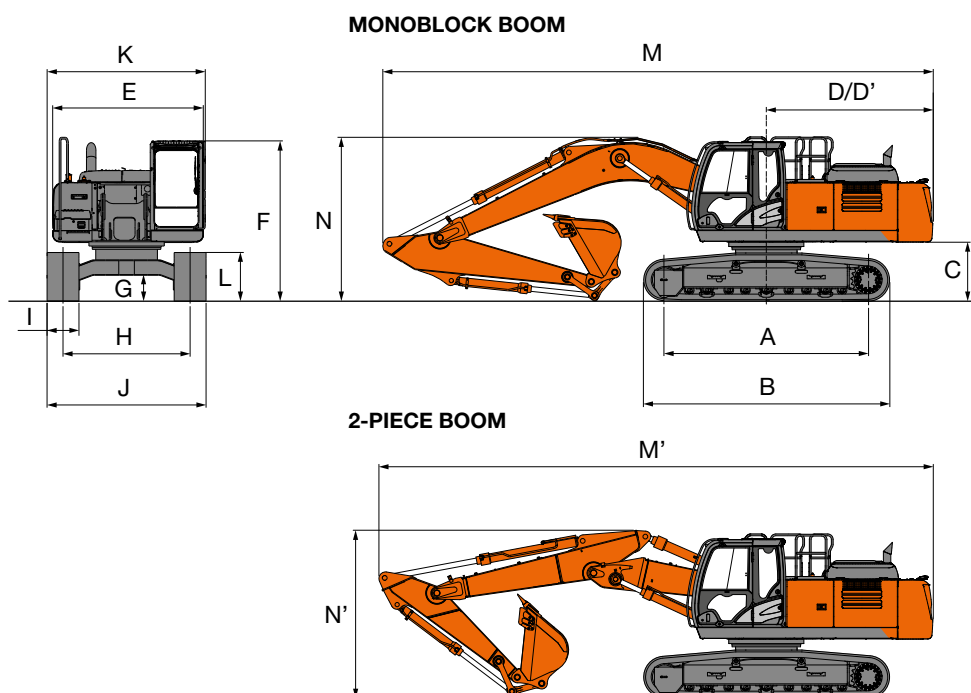
Unit: mm

	ZAXIS 250LC / ZAXIS 250LCN		
	2-Piece boom		
Arm length	2.19 m	2.50 m	2.96 m
A Max. digging reach	9 770	10 010	10 430
A' Max. digging reach (on ground)	9 580	9 820	10 260
B Max. digging depth	5 810	6 080	6 530
B' Max. digging depth for 2.5 m level	5 700	5 970	6 430
C Max. cutting height	11 300	11 470	11 840
D Max. dumping height	8 210	8 350	8 720
D' Min. dumping height	4 660	4 310	3 630
E Min. swing radius	2 500	2 560	2 310
F Max. vertical wall digging depth	5 010	5 120	5 580

Excluding track shoe lug

# SPECIFICATIONS

## DIMENSIONS



Unit: mm

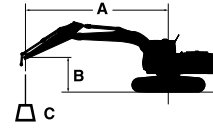
	ZAXIS 250LC	ZAXIS 250LCN
A Distance between tumblers	3 845	3 845
B Undercarriage length	4 640	4 640
* C Counterweight clearance	1 080	1 080
D Rear-end swing radius	3 140	3 140
D' Rear-end length	3 140	3 140
E Overall width of upperstructure	2 870	2 870
F Overall height of cab	3 010	3 010
* G Min. ground clearance	460	460
H Track gauge	2 590	2 390
I Track shoe width	G 600	G 600
J Undercarriage width	3 190	2 990
K Overall width	3 190	2 990
* L Track height with triple grouser shoes	920	920
<b>MONOBLOCK BOOM</b>		
M Overall length		
With arm 2.19 m	10 440	10 440
With arm 2.50 m	10 470	10 470
With arm 2.96 m	10 360	10 360
N Overall height of boom		
With arm 2.19 m	3 340	3 340
With arm 2.50 m	3 370	3 370
With arm 2.96 m	3 080	3 080
<b>2-PIECE BOOM</b>		
M' Overall length		
With arm 2.19 m	10 430	10 430
With arm 2.50 m	10 450	10 450
With arm 2.96 m	10 420	10 420
N' Overall height of boom		
With arm 2.19 m	3 150	3 150
With arm 2.50 m	3 200	3 200
With arm 2.96 m	3 090	3 090

\* Excluding track shoe lug    G: Triple grouser shoe



# LIFTING CAPACITIES

- Notes: 1. Ratings are based on ISO 10567.  
 2. Lifting capacity does not exceed 75% of tipping load with the machine on firm, level ground or 87% full hydraulic capacity.  
 3. The load point is the center-line of the bucket pivot mounting pin on the arm.  
 4. \*Indicates load limited by hydraulic capacity.  
 5. 0 m = Ground.



A: Load radius  
 B: Load point height  
 C: Lifting capacity

For lifting capacities, subtract bucket and quick hitch weight from lifting capacities.

## ZAXIS 250LC MONOBLOCK BOOM

Rating over-front Rating over-side or 360 degrees Unit : kg

Conditions	Load point height m	Load radius										At max. reach		
		1.5 m		3.0 m		4.5 m		6.0 m		7.5 m				meter
Boom 6.00 m	6.0					*7 310	*7 310	*6 720	*6 720			*6 690	6 140	6.95
Arm 2.19 m	4.5					*9 110	*9 110	*7 410	*7 410	*6 750	5 370	*6 740	5 200	7.66
Counterweight	3.0							*8 430	7 210	*7 120	5 250	*6 880	4 760	8.02
6 200 kg	1.5							*9 330	6 940	*7 540	5 120	6 770	4 610	8.09
Shoe 600 mm	0 (Ground)					*13 370	10 160	*9 800	6 780	7 470	5 040	6 980	4 730	7.88
	-1.5					*12 870	10 180	*9 680	6 750			*7 630	5 190	7.34
	-3.0			*15 280	*15 280	*11 550	10 340	*8 660	6 870			*7 860	6 300	6.42
	-4.5					*8 520	*8 520					*7 670	*7 670	4.87
Boom 6.00 m	6.0							*6 300	*6 300			*6 230	5 810	7.20
Arm 2.50 m	4.5					*8 510	*8 510	*7 030	*7 030	*6 400	5 360	*6 250	4 950	7.88
Counterweight	3.0					*10 860	10 850	*8 080	7 190	*6 840	5 210	*6 530	4 530	8.24
6 200 kg	1.5					*12 640	10 260	*9 050	6 880	*7 330	5 060	6 460	4 390	8.31
Shoe 600 mm	0 (Ground)					*13 230	10 040	*9 620	6 700	7 390	4 960	6 630	4 480	8.10
	-1.5			*9 540	*9 540	*12 930	10 030	*9 640	6 640	7 370	4 950	7 270	4 880	7.58
	-3.0			*16 090	*16 090	*11 820	10 160	*8 870	6 720			*7 690	5 840	6.69
	-4.5			*12 580	*12 580	*9 310	*9 310					*7 810	*7 810	5.23
Boom 6.00 m	6.0							*5 770	*5 770	*4 920	*4 920	*4 380	*4 380	7.67
Arm 2.96 m	4.5					*7 720	*7 720	*6 550	*6 550	*6 010	5 400	*4 390	*4 390	8.32
Counterweight	3.0					*10 090	*10 090	*7 660	7 260	*6 530	5 240	*4 580	4 220	8.65
6 200 kg	1.5					*12 130	10 380	*8 730	6 930	*7 090	5 070	*4 950	4 080	8.72
Shoe 600 mm	0 (Ground)					*13 080	10 060	*9 450	6 700	7 370	4 940	*5 600	4 160	8.52
	-1.5			*9 370	*9 370	*13 090	9 980	*9 660	6 610	7 320	4 890	6 660	4 480	8.03
	-3.0	*10 870	*10 870	*15 550	*15 550	*12 270	10 060	*9 180	6 640			*7 310	5 230	7.20
	-4.5			*14 210	*14 210	*10 310	*10 310					*7 610	7 070	5.87

## ZAXIS 250LCN MONOBLOCK BOOM

Rating over-front Rating over-side or 360 degrees Unit : kg

Conditions	Load point height m	Load radius										At max. reach		
		1.5 m		3.0 m		4.5 m		6.0 m		7.5 m				meter
Boom 6.00 m	6.0					*7 310	*7 310	*6 720	*6 720			*6 690	5 690	6.95
Arm 2.19 m	4.5					*9 110	*9 110	*7 410	6 950	*6 750	4 970	*6 740	4 810	7.66
Counterweight	3.0							*8 430	6 640	*7 120	4 850	*6 880	4 390	8.02
6 200 kg	1.5							*9 330	6 380	7 530	4 720	6 750	4 260	8.09
Shoe 600 mm	0 (Ground)					*13 370	9 230	*9 800	6 220	7 450	4 640	6 960	4 360	7.88
	-1.5					*12 870	9 260	*9 680	6 190			*7 630	4 780	7.34
	-3.0			*15 280	*15 280	*11 550	9 410	*8 660	6 300			*7 860	5 800	6.42
	-4.5					*8 520	*8 520					*7 670	*7 670	4.87
Boom 6.00 m	6.0							*6 300	*6 300			*6 230	5 380	7.20
Arm 2.50 m	4.5					*8 510	*8 510	*7 030	6 950	*6 400	4 960	*6 250	4 580	7.88
Counterweight	3.0					*10 860	9 900	*8 080	6 620	*6 840	4 810	*6 530	4 180	8.24
6 200 kg	1.5					*12 640	9 330	*9 050	6 320	*7 330	4 660	6 440	4 040	8.31
Shoe 600 mm	0 (Ground)					*13 230	9 110	*9 620	6 140	7 370	4 560	6 620	4 130	8.10
	-1.5			*9 540	*9 540	*12 930	9 100	*9 640	6 080	7 350	4 550	7 250	4 490	7.58
	-3.0			*16 090	*16 090	*11 820	9 230	*8 870	6 160			*7 690	5 360	6.69
	-4.5			*12 580	*12 580	*9 310	*9 310					*7 810	7 740	5.23
Boom 6.00 m	6.0							*5 770	*5 770	*4 920	*4 920	*4 380	*4 380	7.67
Arm 2.96 m	4.5					*7 720	*7 720	*6 550	*6 550	*6 010	5 000	*4 390	4 230	8.32
Counterweight	3.0					*10 090	*10 090	*7 660	6 690	*6 530	4 840	*4 580	3 890	8.65
6 200 kg	1.5					*12 130	9 450	*8 730	6 360	*7 090	4 670	*4 950	3 760	8.72
Shoe 600 mm	0 (Ground)					*13 080	9 130	*9 450	6 140	7 350	4 550	*5 600	3 830	8.52
	-1.5			*9 370	*9 370	*13 090	9 060	*9 660	6 050	7 300	4 500	6 640	4 120	8.03
	-3.0	*10 870	*10 870	*15 550	*15 550	*12 270	9 140	*9 180	6 080			*7 310	4 800	7.20
	-4.5			*14 210	*14 210	*10 310	9 380					*7 610	6 490	5.87



# EQUIPMENT

● : Standard equipment

○ : Optional equipment

## ENGINE

Aftertreatment device	●
Air cleaner double filters	●
Alternator 50 A	●
Auto idle system	●
Auto shut-down control	●
Cartridge-type engine oil filter	●
Cartridge-type fuel main filter	●
Cold fuel resistance valve	●
DEF/AdBlue® tank inlet strainer and extension filter	●
DEF/AdBlue® tank with ISO magnet adapter	●
Dry-type air filter with evacuator valve (with air filter restriction indicator)	●
Dust-proof indoor net	●
ECO/PWR mode control	●
Electrical fuel feed pump	●
Engine oil drain coupler	●
Expansion tank	●
Fan guard	●
Fuel cooler	●
Fuel pre-filter with water separator	●
Isolation-mounted engine	●
Maintenance free pre-cleaner	○
Radiator, oil cooler and intercooler	●

## HYDRAULIC SYSTEM

Auto power lift	●
Control valve with main relief valve	●
Full-flow filter	●
High mesh full flow filter with restriction indicator	○
Hose rupture valve for arm	●
Hose rupture valve for boom	●
Pilot filter	●
Power boost	●
Suction filter	●
Swing dampener valve	●
Two extra port for control valve	●
Variable reliefvalve for breaker & crusher	●
Work mode selector	●

## CAB

All-weather sound suppressed steel cab	●
AM-FM radio	●
Ashtray	●
Auto control air conditioner	●
AUX function lever (Breaker assist)	○
AUX terminal and storage	●
Cigarette lighter 24 V	●
CRES V (Center pillar reinforced structure) cab	●
Drink holder with hot & cool function	●
Electric double horn	●
Engine shut-off switch	●
Equipped with reinforced, tinted (green color) glass windows	●
Evacuation hammer	●
Floor mat	●
Footrest	●
Front window washer	●
Glove compartment	●
Hot & cool box	●
Intermittent windshield wipers	●
Key cylinder light	●
Laminated round glass window	○
LED room light with door courtesy	●
OPG front guard Level II (ISO10262) compliant cab	○
OPG top guard Level I (ISO10262) compliant cab	●
OPG top guard Level II (ISO10262) compliant cab	○
Pilot control shut-off lever	●
Power outlet 12 V	○
Rain guard	○
Rear tray	●
Retractable seat belt	●
ROPS (ISO12117-2) compliant cab	●
Rubber radio antenna	●
Seat : air suspension seat with heater	●
Seat adjustment part : backrest, armrest, height and angle, slide forward / back	●
Short wrist control levers	●
Sun visor (front window/side window)	○
Transparent roof with slide curtain	●
Windows on front, upper, lower and left side can be opened	●
2 speakers	●
4 fluid-filled elastic mounts	●

## MONITOR SYSTEM

Alarms: overheat, engine warning, engine oil pressure, alternator, minimum fuel level, hydraulic filter restriction, air filter restriction, work mode, overload, SCR system trouble, etc	●
Alarm buzzers: overheat, engine oil pressure, overload, SCR system trouble	●
Display of meters: water temperature, hour, fuel rate, clock, DEF/AdBlue® rate	●
Other displays: work mode, auto-idle, glow, rearview monitor, operating conditions, etc	●
32 languages selection	●

## LIGHTS

Additional cab roof front lights	○
Additional cab roof rear lights	○
Additional boom light with cover	○
Rotating lamp	○
2 working lights	●

## UPPER STRUCTURE

Batteries 2 x 126 Ah	●
Battery disconnect switch	●
Body top handrail	●
Counterweight 6 200 kg	●
Electric fuel refilling pump with auto stop and filter	●
Fuel level float	●
Hydraulic oil level gauge	●
Lockable fuel refilling cap	●
Lockable machine covers	●
Lockable tool box	●
Platform handrail	●
Rear view camera	●
Rear view mirror (right & left side)	●
Skid-resistant plates and handrails	●
Swing parking brake	●
Undercover	●
Utility space	●

## UNDERCARRIAGE

Bolt-on sprocket	●
Reinforced track links with pin seals	●
Shoe: 600 mm triple grouser	●
Track undercover	○
Travel direction mark on track frame	●
Travel motor covers	●
Travel parking brake	●
Upper and lower rollers	●
3 track guards (each side) and hydraulic track adjuster	●
4 tie down hooks	●

## FRONT ATTACHMENTS

Casted bucket link A	●
Centralized lubrication system	●
Dirt seal on all bucket pins	●
Flanged pin	●
HN bushing	●
Reinforced resin thrust plate	●
WC (tungsten-carbide) thermal spraying	●
Welded bucket link A	○

## ATTACHMENTS

Accessories for 2 speed selector	○
Additional pump (30 L/min)	○
Assist piping	○
Attachment basic piping	●
Breaker and crusher piping	●
Parts for breaker and crusher	●
Pilot accumulator	○

## MISCELLANEOUS

Global e-Service	●
Onboard information controller	●
Standard tool kit	●

Standard and optional equipment may vary by country, so please consult your Hitachi dealer for details.

\* Hitachi Construction Machinery cannot be held liable for theft, any system will just minimize the risk of theft.

Prior to operating this machine, including satellite communication system, in a country other than a country of its intended use, it may be necessary to make modifications to it so that it complies with the local regulatory standards (including safety standards) and legal requirements of that particular country. Please do not export or operate this machine outside the country of its intended use until such compliance has been confirmed. Please contact your Hitachi dealer in case of questions about compliance.

These specifications are subject to change without notice. Illustrations and photos show the standard models, and may or may not include optional equipment, accessories, and all standard equipment with some differences in color and features. Before use, read and understand the Operator's Manual for proper operation.

